

EM210 AV New Terminal Position and Wiring

For better error-proof connection.

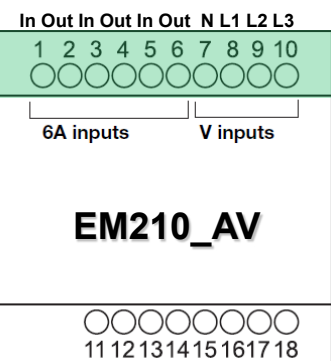


(1) ◀ I3 OUT	(5) ◀ I1 OUT	(9) L1	CE
(2) ▶ I3 IN	(6) ▶ I1 IN	(10) N	
(3) ◀ I2 OUT	(7) L3		
(4) ▶ I2 IN	(8) L2		



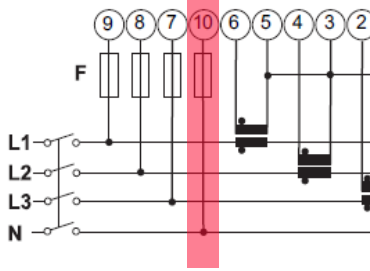
(1) ▶ I1 IN	(5) ▶ I3 IN	(9) L2	CE
(2) ◀ I1 OUT	(6) ◀ I3 OUT	(10) L3	
(3) ▶ I2 IN	(7) N		
(4) ◀ I2 OUT	(8) L1		

I1 I2 I3 (N L) 1Ph



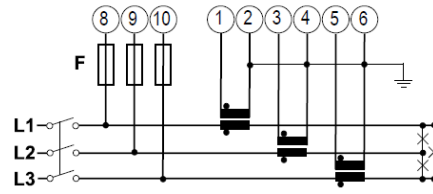
Measurement on three-phase systems **without neutral** (always self-power supply).

EM21 AV



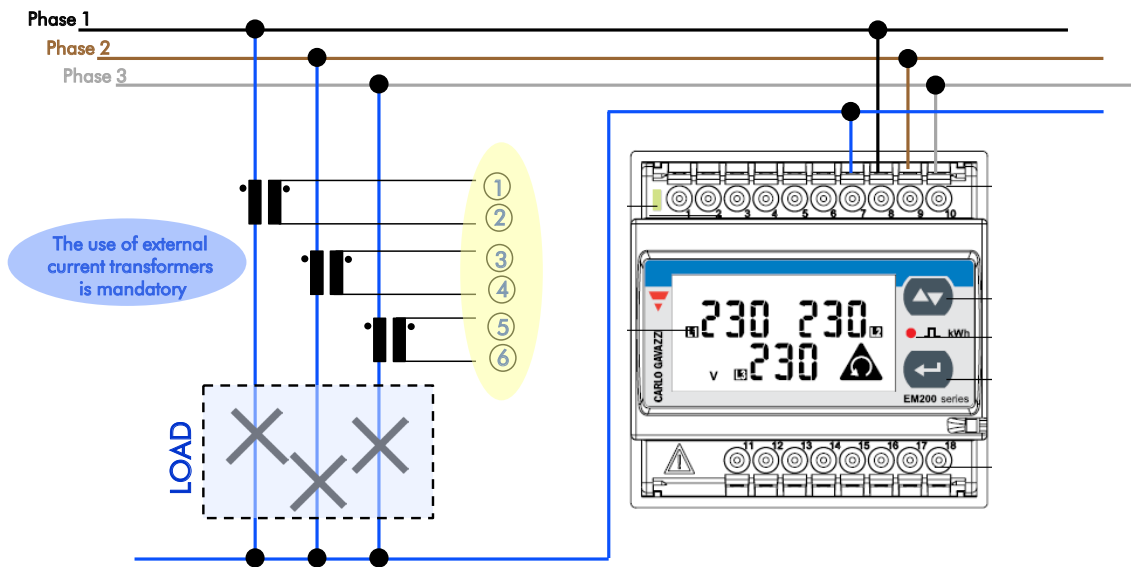
Mandatory connection!
(supply between L1 and N)

EM210 AV

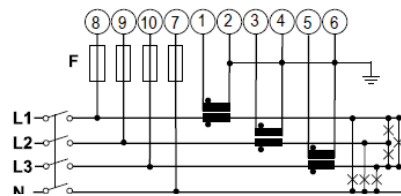


Neutral not required
(supply between L2 and L3)

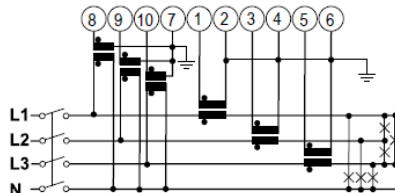
EM210 AV – Wiring



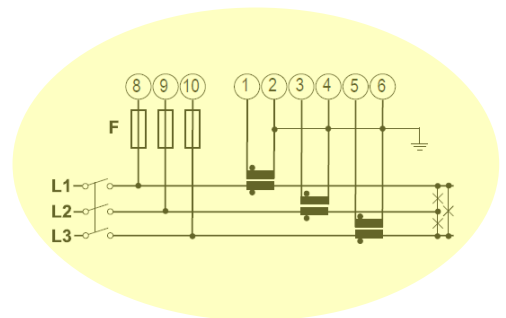
3-phase + N unbalance system
(3 CT connection)



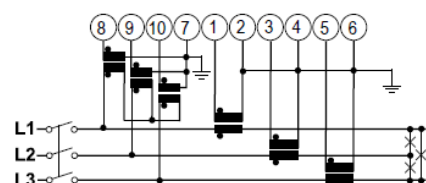
3-phase + N unbalance system
(3 CT + 3 VT connection)



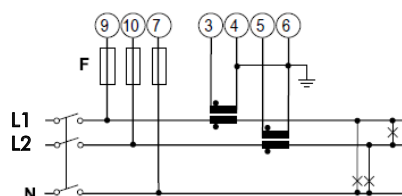
NEW
3-phase without N unbalance system
(3 CT connection)



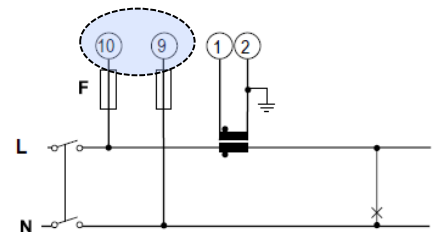
3-phase without N unbalance system
(3 CT + 3 VT connection)



2-phase + N unbalance system
(2 CT connection)



1-phase + N unbalance system
(1 CT connection)



For further information call 01276 854110