

M2M & Metering

2G/3G/4G Bracket Mount Antenna

14/04/2015 v3

Camax Ltd



- Cost effective 4G/3G/2G omni-directional antenna
- Wall or Mast Mounting
- Simple installation

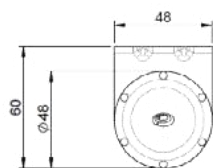
The B4BE antenna is a cost effective omni-directional broad band antenna for 4G/3G/2G devices and is suitable for external or internal installation.

The design of the mounting bracket enables simple wall mounting using the supplied screws and wall plugs or mast mounting using a pipe clip or cable ties (not supplied).

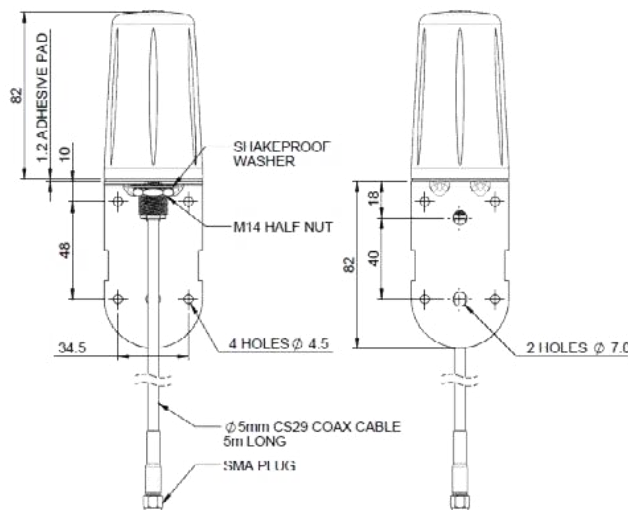
The omni-directional radiation pattern allows easy placement of the antenna in an elevated position.

This antenna is an ideal solution for use in industrial and domestic environments with cellular modems/routers and Machine to Machine (M2M) wireless connectivity applications.

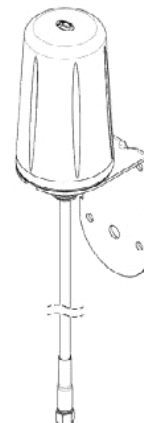
Technical Drawing



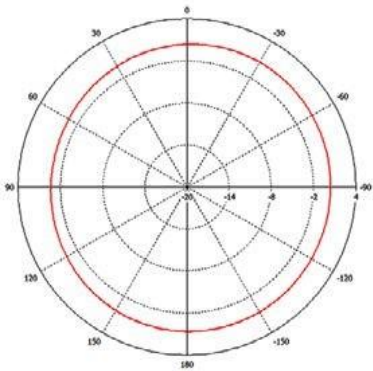
FREQUENCIES:
698 - 960 MHz
1710 - 2700 MHz



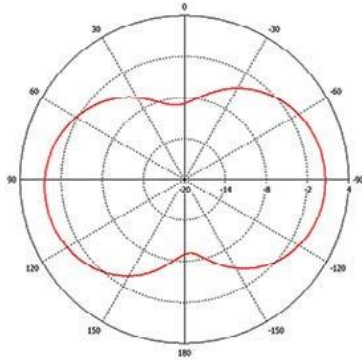
ISO VIEW
SCALE 1:2



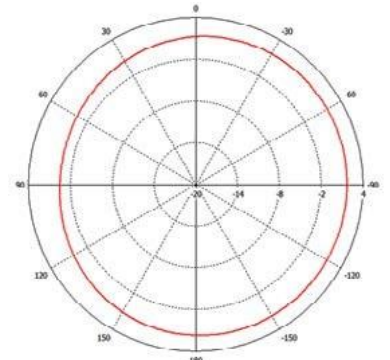
H Plane Plot (700 MHz)



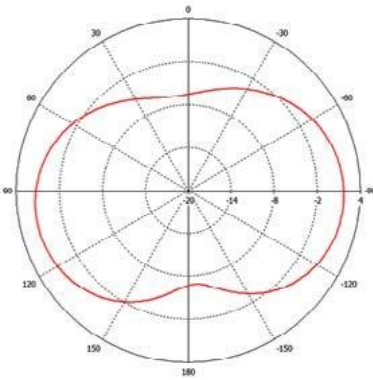
E Plane Plot (700MHz)



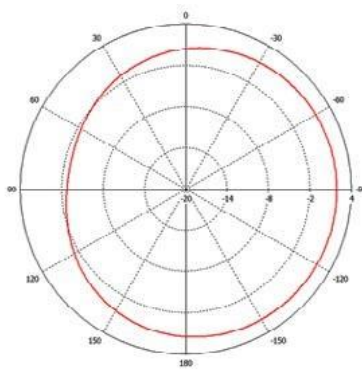
H Plane Plot (800MHz)



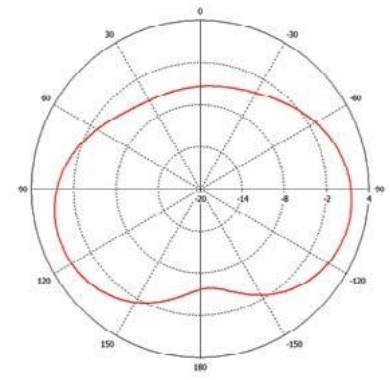
E Plane Plot (800MHz)



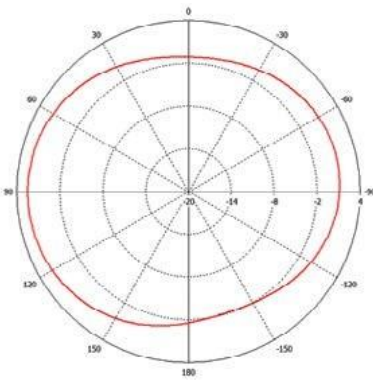
H Plane Plot (900MHz)



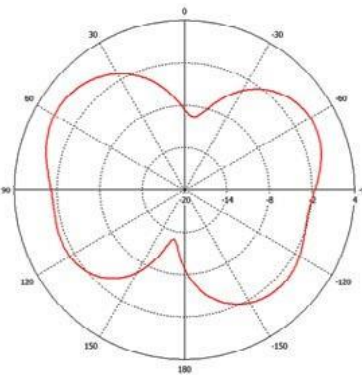
E Plane Plot (900MHz)



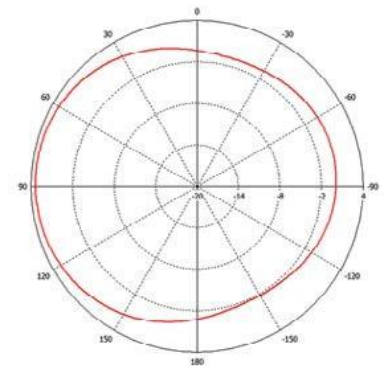
H Plane Plot (1800 MHz)



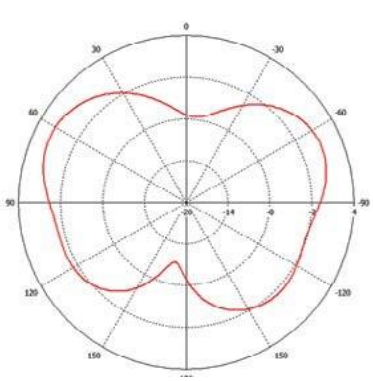
E Plane Plot (1800MHz)



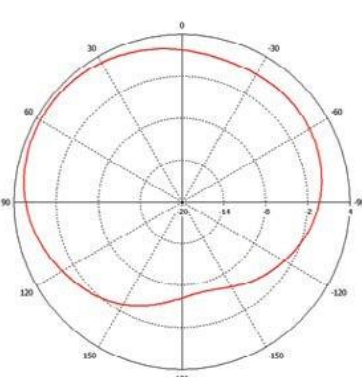
H Plane Plot (2100MHz)



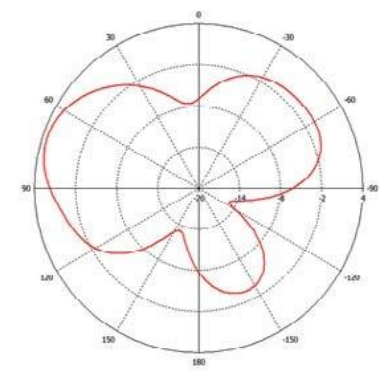
E Plane Plot (2100 MHz)



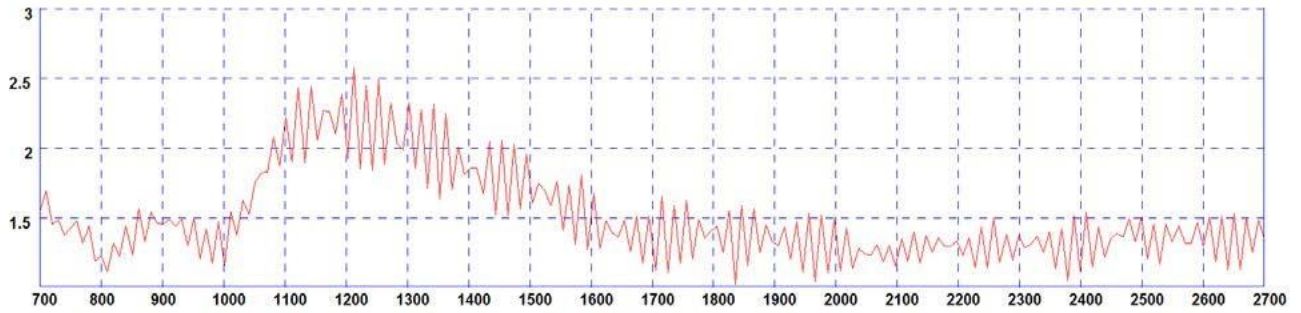
H Plane Plot (2600MHz)



E Plane Plot (2600MHz)



Typical VSWR (B4BE-7-27-5SP)



*Measured with 5m of CS29 cable

Part No.		B4BE-7-27-5SP	B4BE-7-27-05SP
Electrical Data			
Frequency Range (MHz)		698-960, 1710-2700	
Operational Band		LTE 700 , AMPS / GSM850, GSM900, GSM1800, PCS1900, 3G UMTS, 2.4GHz WIFI, 2.6GHz LTE	
VSWR		< 2.5:1	
Peak Gain:	698-960MHz	2dBi	
Isotropic	1710-2700MHz	4dBi	
Radiated Efficiency*		> 70%	
Pattern		Omni-directional	
Polarisation		Vertical	
Impedance		50Ω	
Max Input Power (W)		60	
Mechanical Data			
Dimensions	Height Mounted	164 (6.46")	
(mm)	Diameter	48 (1.89")	
Operating Temp (°C)		-40°/+80°C (-40°/176°F)	
Material		ABS., Aluminium and Galvanised Steel	
Colour		Black & Natural	
Mounting Data			
Fixing		Wall mount or Mast mount	
Mounting	Height	82 (3.2")	
Bracket	Recommended Screw		
(mm)	Fixings	4 (0.16")	
Cable Data			
Type		CS29	
Diameter (mm)		5 (1.9")	
Length (m)		5 (16'4")	0.5 (19.6")
Termination		SMA Plug	SMA Plug

*Excluding cable loss