

# SP MAX

## ELECTRICAL ENERGY PROFILE LOGGER



### Features

- True RMS Measurements
- 12 Bit Resolution
- $\pm 0.25\%$  Accuracy
- Measure 3 current, 1 voltage, 1 power factor, 1 dry contact pulse input.
- Downloads with Sp PowerPack software

### Applications

- Energy Studies
- Industrial Monitoring
- Machinery and motor analysis
- HVAC studies
- Electrical Utilities
- Peak shaving and Load Management

	Specification	Notes
<b>Maximum Channels</b>	6	Selectable storage for each channel.
<b>Range</b>	Channel 1 0 - 275 VAC Channel 2 0 - 1 VAC - Current CT Input Channel 3 0 - 1 VAC - Current CT Input Channel 4 0 - 1 VAC - Current CT Input Channel 5 0 - 180° Channel 1 to Channel 2. Channel 6 Pulse input from dry contacts	True RMS for 50/60 Hz. operation. Pulse input is used for dry or voltage free contacts only. Other voltage ranges available - contact Northwood for details. Power factor calculated via software (cos $\theta$ ).
<b>External Connections</b>	Aux. power, download, 3 current, 1 voltage, 1 pulse	
<b>Sensor Type</b>	External CT's, internal impedance network for voltage .	
<b>Sampling Rate</b>	1/4 second.	Set via Silent Partner software.
<b>Storage Rate</b>	1 second to 15 mins.	Set via Silent Partner software.
<b>Parameters Stored</b>	Avg, Min/Max, or Min/Max/Avg.	Set via Silent Partner software.
<b>Memory</b>	512K, non-volatile RAM.	
<b>Memory Treatment</b>	Stop when full, or wrap.	Set via Silent Partner software.
<b>Storage Capacity</b>	15 days for 5 channels, min/max/avg, 1 minute storage.	Storage available depends on number of channels and storage mode.
<b>Indicators</b>	LED's for: Line Power, Over/Under/Phase, Overcurrent	
<b>Power</b>	Line Power, Internal battery, external adapter.	Internal battery recharged via line or external adapter.
<b>Battery Life</b>	14 Days (can also operate from external adapter).	
<b>Communications</b>	Opto-isolated RS232, support for remote setup.	
<b>Software</b>	Silent Partner for Windows.	Requires PC running Windows 3.1 or greater and 1 free serial port.
<b>Packaging</b>	Rugged, durable ABS.	
<b>Accuracy</b>	$\pm 0.25\%$ Range + CT error	
<b>Safety</b>	Optically isolated download, double insulated ???	
<b>Operating Temperature</b>	- 40°C to 60°C	

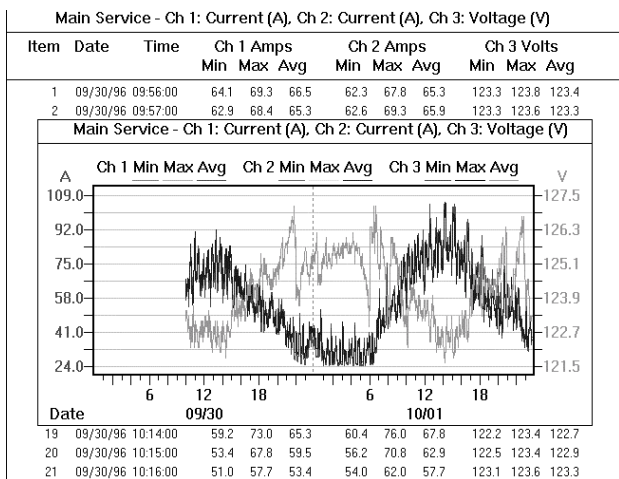
*Specifications Subject to Change Without Notice*

# SP PowerPack Software - Simple, Easy, Powerful

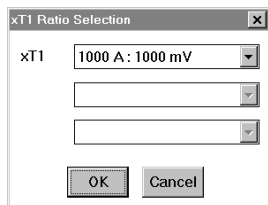
SP PowerPack allows you to download, save, retrieve and analyze the data collected with the Silent Partner Plus. The software will run on any PC running Windows 3.1 or greater with 1 free serial port for data transfer.

## Software Features

- W95/98/NT
- Full colour printer support.
- Built-in export to WK1 spreadsheet translation.
- Allows you to import a bitmap file so you can include your company logo on printed reports.
- One Silent Partner software can download any logger in the Silent Partner family.
- View your data in graphical form or view the actual numerical data in tabular form.

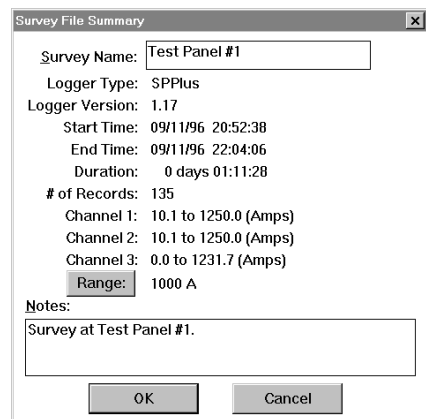


- Enable and disable individual traces to remove on-screen clutter.
- Graphs can be configured to display a single or dual Y-axis.
- Zoom feature allows you to view graphs in maximum detail.



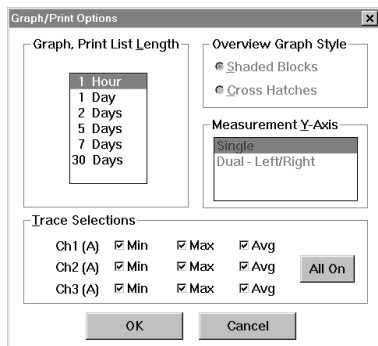
- Scale your data using multipliers to implement CT or PT ratios. This enables you use CT's and PT's with different primary to secondary ratios.

- The Survey Summary gives you concise statistics about your data in one compact report.



- The Notes box allows you to enter information about the test site, particulars of the hookup, contact names, etc.

- View graphs in 1 hour, 1 day, 1 week or 1 month increments
- View up to 9 traces on a single graph - Min, Max, and Average for all 3 channels.



- Software indication of low battery voltage in the Silent Partner Plus logger.
- All setup of sampling rate/storage interval, time and channel configuration is done via software.

Description	Diameter	1+
SP MAX Kit c/w : 200/1000A Flex CTs	200mm	£1495.00
SP MAX Kit c/w 1000A CTs	52mm	£1395.00
SP MAX Kit c/w 1000A CTs		Hire it for: £99.00 per week



Elcomponent Ltd  
 Unit 5, Southmill Trading Centre  
 Bishop's Stortford Herts CM23 3DY  
 Tel: 01279 503173 Fax: 01279 654441

e-mail: sales@elcomponent.co.uk  
 website: www.elcomponent.co.uk