

SPLIT CORE CURRENT TRANSFORMERS

TP Series

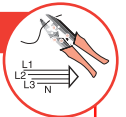
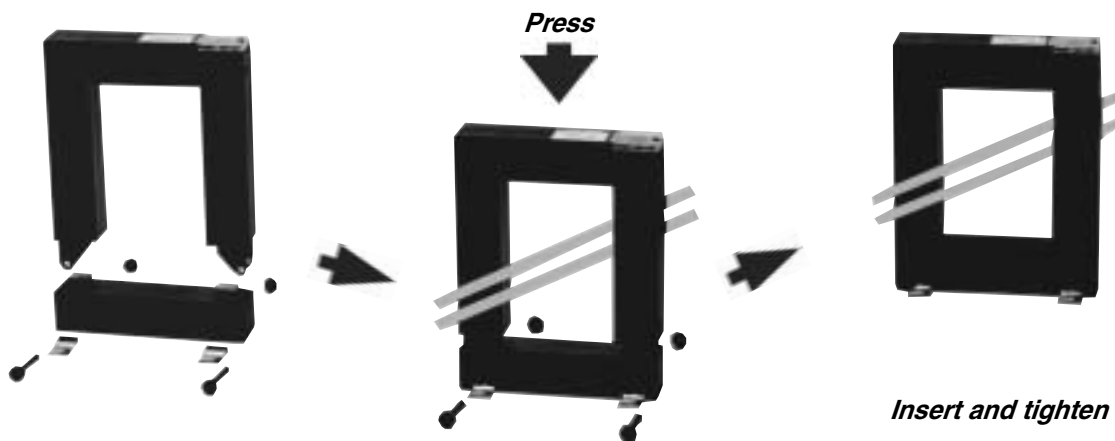
The **TP** series of current transformers have been especially designed to facilitate their installation in new or already existing networks. Thanks to its split core they may be installed without opening any cable or bus bar circuit.

The connection of conventional CTs usually requires the interruption of the primary side circuit to pass cables or bus bars through the transformer core or to connect such cables to the primary terminals. The **TP** series transformers core may be easily opened and they may be installed and connected without any supply interruption, thus saving time and installation costs.

The main features of **TP** transformers are then:

- Small size and easy mounting
- Wide inner window, allowing clamping of big cables or bus bars
- Wide range of sizes to accommodate all the existing installations
- Terminal strip to short circuit the secondary side during the installation
- Primary ranges from 100 to 5000 A
- Secondary output 5 A, 1 A or 1.5 V
- High accuracy and reliability

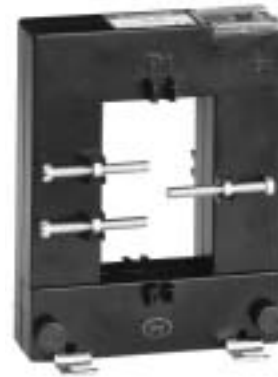
TP



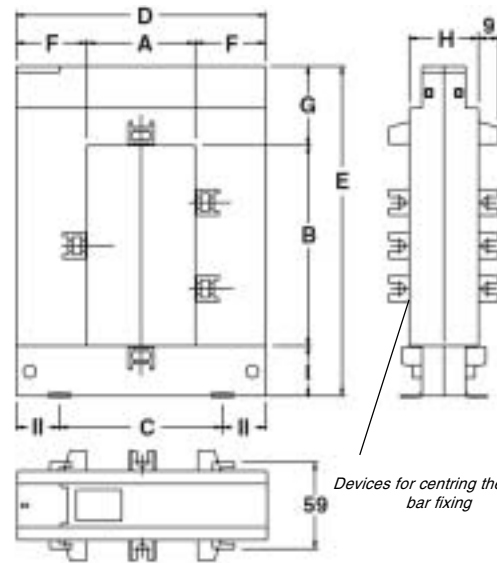


TP SERIES

Code and type	A	Burden VA		
		Class:		
		0.5	1	3
2 22 005 TP 23	100/5	--	--	1,5
2 22 006 TP 23	150/5	--	--	2
2 22 007 TP 23	200/5	--	1,5	2,5
2 22 008 TP 23	250/5	--	2	4
2 22 009 TP 23	300/5	1,5	4	6
2 22 010 TP 23	400/5	2,5	6	10
2 22 025 TP 58	250/5	1	2	4
2 22 026 TP 58	300/5	1,5	3	6
2 22 027 TP 58	400/5	1,5	3	10
2 22 028 TP 58	500/5	2,5	5	15
2 22 029 TP 58	600/5	2,5	5	17,5
2 22 030 TP 58	750/5	3	6	18
2 22 031 TP 58	800/5	3	7	18
2 22 032 TP 58	1000/5	5	10	20
2 22 035 TP 88	250/5	1	2	4
2 22 036 TP 88	300/5	1,5	3	6
2 22 037 TP 88	400/5	1,5	3	10
2 22 038 TP 88	500/5	2,5	5	15
2 22 039 TP 88	600/5	2,5	5	17,5
2 22 040 TP 88	750/5	3	6	18
2 22 041 TP 88	800/5	3	7	18
2 22 042 TP 88	1000/5	5	10	20
2 22 048 TP-812	500/5	--	4	12
2 22 049 TP-812	600/5	--	5	14
2 22 050 TP-812	750/5	2,5	6	17
2 22 051 TP-812	800/5	3	7	18
2 22 052 TP-812	1000/5	5	9	20
2 22 053 TP-812	1200/5	6	11	24
2 22 054 TP-812	1250/5	7	15	28
2 22 055 TP-812	1500/5	8	17	30
2 22 061 TP-816	1000/5	10	15	20
2 22 062 TP-816	1500/5	15	20	25
2 22 063 TP-816	2000/5	15	20	25
2 22 064 TP-816	2500/5	15	20	25
2 22 065 TP-816	3000/5	20	25	30
2 22 066 TP-816	4000/5	20	25	30
2 22 067 TP-816	5000/5	20	25	30



TP-58



Devices for centring the bus-bar fixing

NOTE: All types will be factory delivered with devices for centring the bus-bar fixing excepts for the **TP-23**

Type	A	B	C	D	E	F	G	H	I	Weight
TP-23	20	30	51	89	110	34	47	40	32	0,75 kg
TP-58	50	80	78	114	145	32	32	32	33	0,90 kg
TP-88	80	80	108	144	145	32	32	32	33	1,00 kg
TP-812	80	120	108	144	185	32	32	32	33	1,20 kg
TP-816	80	160	120	184	245	52	47	52	38	3,50 kg

Any voltage output can be supplied, on request



TP TECHNICAL FEATURES

Highest voltage for equipment (U_m)	0,72 kV a.c.
Rated insulation level	3 kV
Frequency response	Linear 50...60 Hz
Rated short-time thermal current (I_{th})	60 I_n
Rated dynamic current (I_{dyn})	2,5 I_{th}
Transformer ratio, rated output and accuracy class	According to types (.../5 A or .../1 A)
Thermal class	A
Use	Indoor
Coating	Self-extinguishing (UL94VO)
Secondary terminal box	Sealable
Dimensions and weight	According to types

Standards

IEC 44-1, UNE 21 088-1, UL 94, VDE 0414