

# OmegaPAT

The most advanced Portable Appliance Tester

Buy online <http://isswww.co.uk>



## Wide application range

- Enables complete safety verification of a wide range of electrical appliances of Class I, Class II and Class III appliances.
- Ideally suited for periodical testing, electrical service interventions, and control testing.
- Supports 230 V and 110 V.

## Autotest mode for easier and faster testing

- It offers a list of preprogrammed autotest sequences and the possibility to customize your own test procedure.
- Over 4000 Autotests can be stored into the memory.
- Supports RFID and Barcode labels for super fast auto-testing.

## High accuracy and safety

- The instrument meets or exceeds the demands of the latest safety and appliance testing standards.
- High accuracy the highest protection of the user and tested appliance during test is guaranteed in all working conditions.

## Easy operation

- High resolution large graphic display contains all important information when working with the tester.
- Customized keypad with jogger for fast access to all of the functions.
- All the test can be performed without external adapters.
- Fast direct print-out facilities for immediate printing.

## PC Software package PAT Link.

- Perfect tool for documentation, analysis and printing out test reports.

## Robust, waterproof case

- The new Metrel case offers high protection even if working in arduous conditions.
- All standard accessories can fit inside the case.

The complete analysis of safety :

- Visual test
- Earth Bond Test
- Insulation
- Sub Leakage Current
- Touch Leakage Current
- Differential Leakage Current
- Flash Test
- Power Test
- Polarity (cord) Test

Measurements and testing in accordance with:

- |             |   |
|-------------|---|
| IEC 60335-1 | Household and similar electrical appliances |
| IEC 60598-1 | Luminaries                                  |
| IEC 60745   | Hand-held motor operated tools              |
| IEC 60950   | Safety of information technology equipment  |
| VDE 701 T1  | Repair and modification inspections         |
| VDE 702 T1  | Repeat tests of electrical appliances       |

Standard set      Order No. MI 2140



- Instrument OmegaPAT
- Earth Bond Clip
- Flash Test Probe
- Instruction Manual
- Production verification data
- Declaration of warranty
- Declaration of conformity



PERFORM NEW TEST 07-Mar-02 16:08



Selection of the appliance type.



Pre-programmed auto test sequences.



Help menus for individual tests.



Clear and easy access to test procedure:  
- select the auto test  
- press START

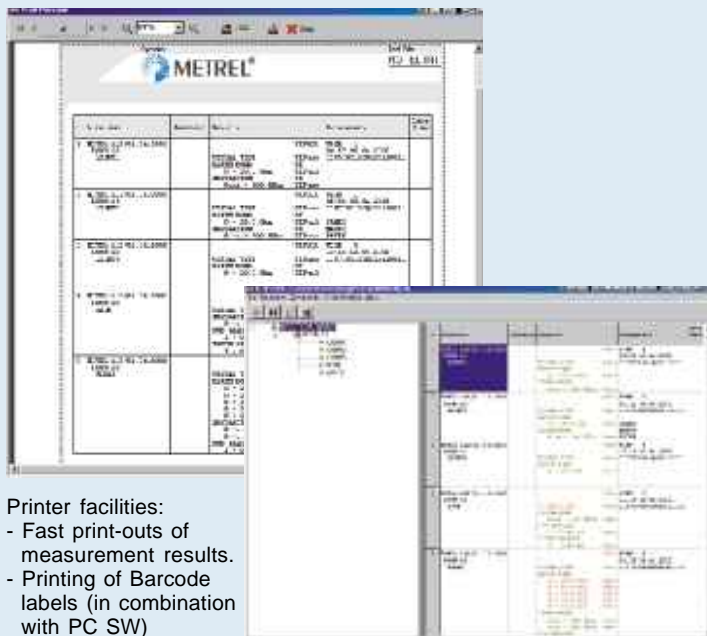


Multi - input / output ports:

- Bar code reader
- RFID reader / printer
- Printer
- PC

The accompanying professional PC SW package PATLink enables:

- viewing and analysing measurement results,
  - storing of results for documentation,
  - operating of test reports,
  - printing of test reports.
- Also available PC SW package simply PATs which supports most common PAT testers



Printer facilities:

- Fast print-outs of measurement results.
- Printing of Barcode labels (in combination with PC SW)



**Earth Bond**

Test currents: 100 mA, 4 A, 10 A, 25 A  
Measuring range: 0.00 ~ 19.9 Accuracy: ±(5 % + 5 dig.)

**Insulation**

Test voltage: 250 V, 500 V  
Measuring range: 0.000 ~ 199.9 M Accuracy: ±(5 % + 5 dig.)

**Substitute Leakage**

Test voltage: 40 V  
Measuring range: 0.00 ~ 1.99 mA Accuracy: ±(5 % + 5 dig.)

**Touch Leakage**

Measuring range: 0.00 ~ 19.99 mA Accuracy: ±(5 % + 5 dig.)

**Leakage**

Measuring range: 0.00 ~ 19.99 mA Accuracy: ±(5 % + 5 dig.)

**Power**

Measuring range: 0 ~ 4 kVA Accuracy: ±(5 % + 5 dig.)

**Flash Test**

Output voltage: 1500 V / 3000 V  
Measuring range: 0.00 ~ 2.50 mA Accuracy: ±(5 % + 5 dig.)  
Trip-out function: yes

**Polarity**

Output voltage: 40 V  
Faults: Open, Short, Crossed, Multiple fault

Timer: All functions, 2 s ~ 180 s

Limits: All functions, programmable

Mains voltage ~230 V system  
Mains voltage ~115V system  
Max. power consumption

230 V (+6 % - 10 %) / 50 or 60 Hz  
115 V (+6 % - 10 %) / 50 or 60 Hz  
150 VA (without load on TEST SOCKETS)

Display  
RS232 interfaces  
Memories

Graphic, 240 X 128 dots  
Baud rate 115200  
4000 memory locations

Shock proof plastic / portable case  
Dimensions (w · h · d)

335 x 160 x 335 mm

Mass (without accessories)

9 kg

Pollution degree

2

Degree of protection (closed)

IP 54

Overvoltage category

Cat II / 300 V

Protection classification

I

Working temperature range

- 10 | + 50 C

Protection against overload on test sockets:

yes

Protection against shorted appliances or excessive leakages:

yes

Earthing connection detection:

yes

**Optional accessories**

**Order No.:**



- Printer A 1103
- 110 / 230 V adapter A 1104
- Bar Code reader A 1105
- Bar Code Labels, 200 pcs A 1106
- RFID reader / writer \* A 1107
- RFID tags, 50 pcs\* A 1108
- OmegaPAT link A 1109
- PC SW package Simply PATs\* A 1110

\*will follow later in 2002



Metrel Measuring and Regulating Equipment Manufacturer, d.d.

Horjul 188, 1354 Horjul - SLOVENIA

Tel.: +386 1 755 82 00; Fax: +386 1 754 92 26

Internet: <http://www.metrel.si>; E-mail: [metrel@metrel.si](mailto:metrel@metrel.si)

**Distributor:**

Instrument Sales and Service Limited

Unit 9 Cadzow Industrial Estate

Hamilton Scotland ML3 7QU

Tel: 01698 458222

Fax: 01698 458555

Email: [sales@isswww.co.uk](mailto:sales@isswww.co.uk)