

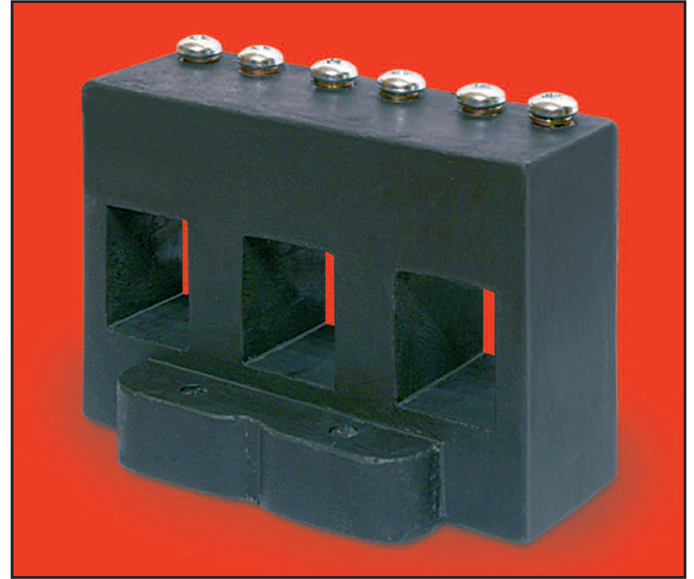
# MINIATURE THREE PHASE CURRENT TRANSFORMERS

## DESCRIPTION

Resin cast miniature three phase current transformers with inbuilt mounting foot suitable for primary ranges from 100A - 250A with 5A secondary.

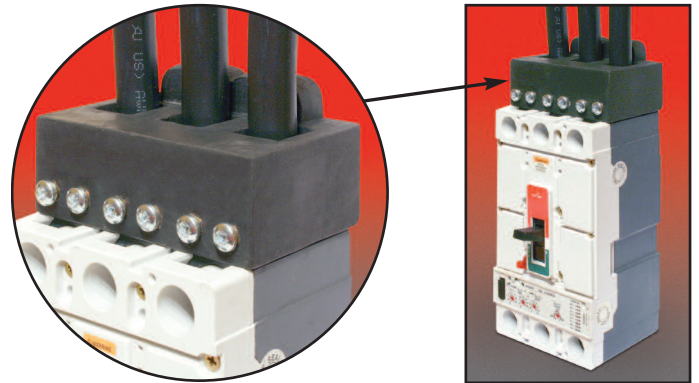
## APPLICATION

For installation onto cables or 20mm maximum busbars. The products have an overall width of 105mm allowing installation directly alongside breakers for greater speed of installation and optimisation of space.



## SPECIFICATIONS

- Conforms to IEC 185, BS 7626, BSEN 60044-1 and IEC 60044-1.
- Rated system voltage 0.72/3kV.
- Ambient temperature range -30°C to 80°C.
- Frequency range 50-60Hz.
- Insulation level 3kV for 1 minute.
- Continuous current, 1.2 x rated current.

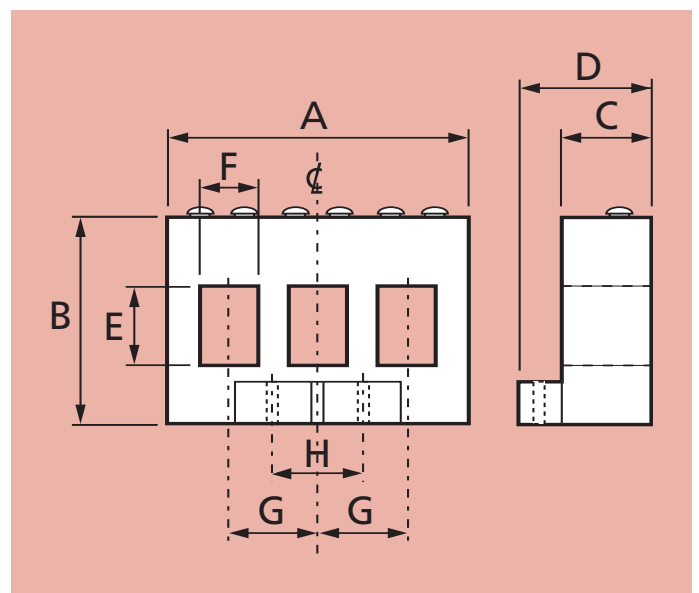


## RANGE

Type	Current Ratio	A	B	C	D	E	F	G	H
CT105-100A	100/5A	105	70	38	53	25	21	35	35
CT105-150A	150/5A	105	70	38	53	25	21	35	35
CT105-200A	200/5A	105	70	38	53	25	21	35	35
CT105-250A	250/5A	105	70	38	53	25	21	35	35

All types: 2.5VA, class1

## DIMENSIONS (mm)



Our policy is one of continuous development and therefore specifications may change without notice.

## HOWARD BUTLER LTD

CROWN WORKS, LINCOLN ROAD  
WALSALL WS1 2EB ENGLAND

Tel: 01922 640003 Fax: 01922 723626

International Tel: +44 1922 640003 E-mail: sales@hobut.co.uk

<http://www.hobut.co.uk>